

# Diplexer SSPD-113-12

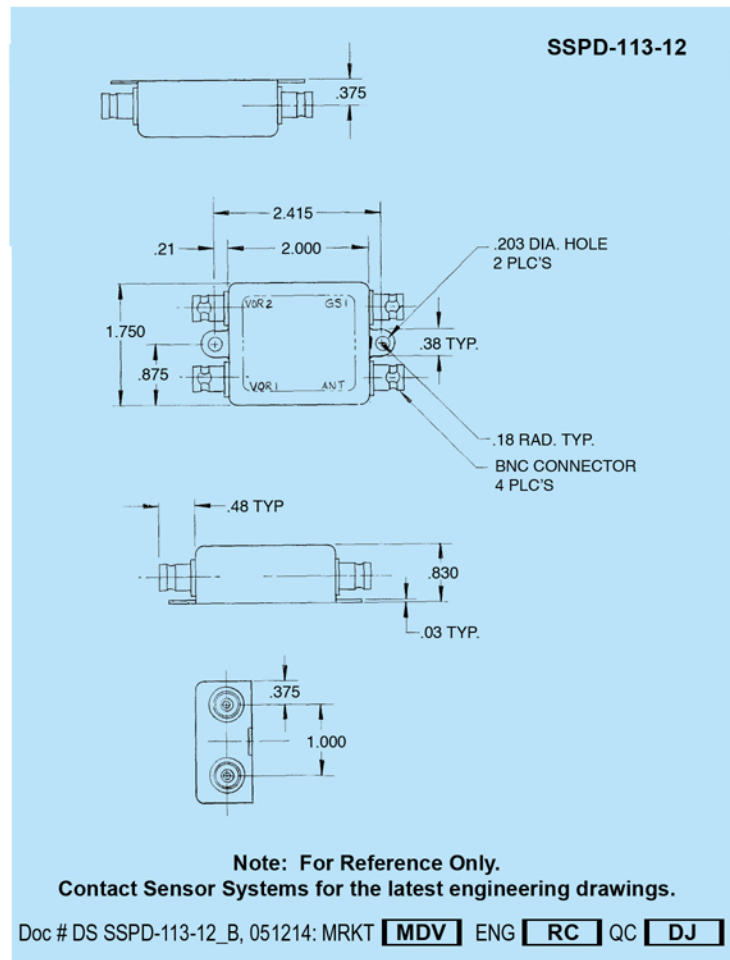
Dual VOR w/Glide Slope



## DESCRIPTION

**SSPD-113-12:** Diplexer operating at 108-118 MHz and 329-336 Mhz. Splits the signal from a single VOR/LOC/Glide Slope antenna system for installations utilizing dual VOR receivers and a single Glide Slope receiver. Low insertion loss with high isolation. BNC connectors.

SPECIFICATIONS	
MODEL	SSPD-113-12
<b>ELECTRICAL</b>	
Frequency	108-118 MHz, 329-336 MHz
Insertion Loss	0.3 dB Min.
VSWR	1.5:1 Max
Isolation	20 dB Min
<b>MECHANICAL</b>	
Weight	.2 lbs.
Height	0.83 in.
Length	2.4 in.
Width	1.7 in.
Material	Steel
Finish	Skydrol-Resistant Epoxy Enamel
Connector	BNC



Sensor Systems, Inc. 8929 Fullbright Ave., Chatsworth, CA 91311 Ph: 818-341-5366 Fax: 818-341-9059  
Email: info@SensorAntennas.com www.SensorAntennas.com